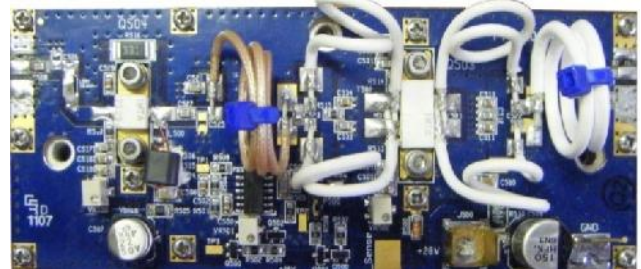




PP88-108-25 VHFTV – FMHD – 25W Solid State Broadband High Power Pallet Amplifier

The PP88-108-25 is a 25W pallet amplifier for the 88-108 MHz band. Superior performance is provided offering high gain, efficiency and power in a small pallet footprint using advanced broadband RF matching networks, and the finest Gold MOSFET transistors available on the market today. Matched for 50 ohms input and output, Thermal Tracking bias allows for the PP88-108-25 to operate Class A providing 25 watts Linear output power, making this the natural Choice for your high power linear broadcast communications applications.



Specifications (Vsupply=+28V Vdc, Idq=2.70A, TBase=25°C)				
Parameter	Min.	Typ	Max.	Unit
Frequency	88		108	MHz
Pout P1dB	40	45		Watts
Gain	35	36		dB
Pout Linear	25			Watts
Power In		6.3	7.9	mW
Drain Current		3.5	3.8	Amps
Efficiency	23.5	25.5		%
Input VSWR		1.2:1	1.5:1	
2 nd Harmonic		-25		dBc
3 rd Harmonic		-18		dBc
Baseplate Operating Temp.	0		+70	°C
Size	2.0" x 5.0" x 1.0"			

Features

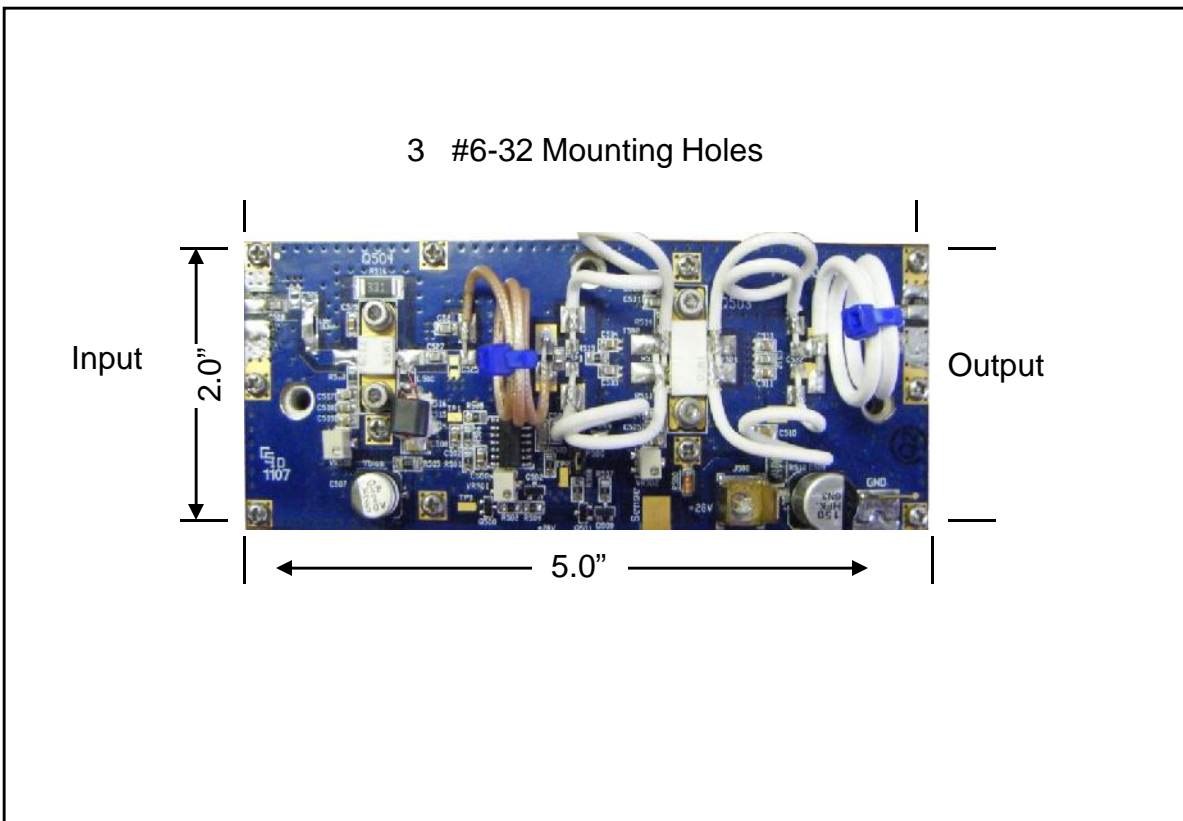
- 25 Watts Class A, Ultra Linear
- 50 ohms input/output
- Thermal tracking Bias
- 50 Watts PEP @32vDC
- No circuit tuning or RF assembly
- Amplifier disable input

Maximum Ratings	
Parameter	Value
Input Voltage	+32 VDC
Bias Current	3.25 Amp
Drain Current	5.0 Amp
Load Mismatch	
All Phase angles,	3:1
Baseplate Temp	+60°C
Storage Temp	-40° - +105°C



PP88-108-25
VHFTV – FMHD – 25W
Solid State Broadband
High Power Pallet Amplifier

Reference Circuit



Reference circuit size (not to scale)